

Volume of fertilizers consumed in late rice in Hengyang City, Yueyang City and Changde City in Hunan Province in China, 2012

- The consumption of nitrogen fertilizer, compound fertilizer and phosphate fertilizer for late rice in these three cities in Hunan Province is below 50kg/mu; for potash fertilizer, below 15kg/mu.

- In comparison, the consumption of nitrogen fertilizers for per unit of planting area in Hengyang City is larger than the other two cities investigated. Approximately 95% of the users surveyed use more than 10kg/mu of nitrogen fertilizers on the crops while more than a half users surveyed in Yueyang City and Changde City use less than 10kg/mu on crops.

- In comparison, the consumption of compound fertilizers for per unit of planting area in Yueyang City is larger than the other two cities investigated. Nearly 75% of the users surveyed use more than 30kg/mu on the crops.

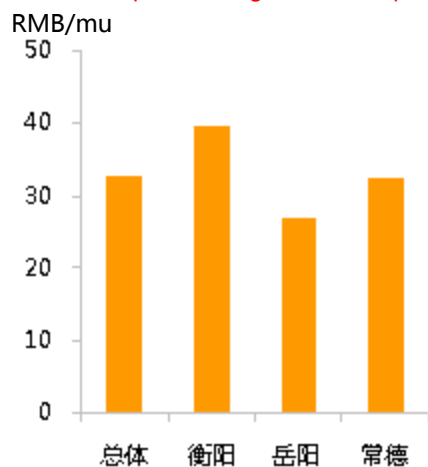
Nitrogen fertilizers (kg/mu)	Total	Hengyang	Yueyang	Changde	Compound fertilizers (kg/mu)	Total	Hengyang	Yueyang	Changde
	N=663 %	N=258 %	N=212 %	N=193 %		N=460 %	N=157 %	N=164 %	N=139 %
1-10	XX	XX	XX	XX	1-10	XX	XX	XX	XX
11-20	XX	XX	XX	XX	11-20	XX	XX	XX	XX
21-30	XX	XX	XX	XX	21-30	XX	XX	XX	XX
31-40	XX	XX	XX	XX	31-40	XX	XX	XX	XX
41-50	XX	XX	XX	XX	41-50	XX	XX	XX	XX
≥51	XX	XX	XX	XX	≥51	XX	XX	XX	XX
Potash fertilizers (kg/mu)	Total	Hengyang	Yueyang	Changde	Phosphate fertilizer (kg/mu)	Total	Hengyang	Yueyang	Changde
	N=219 %	N=112 %	N=720 %	N=350 %		N=940 %	N=380 %	N=300 %	N=260 %
1-5	XX	XX	XX	XX	1-10	XX	XX	XX	XX
6-10	XX	XX	XX	XX	11-20	XX	XX	XX	XX
11-15	XX	XX	XX	XX	21-30	XX	XX	XX	XX
16-20	XX	XX	XX	XX	31-40	XX	XX	XX	XX
21-25	XX	XX	XX	XX	41-50	XX	XX	XX	XX
≥26	XX	XX	XX	XX	≥51	XX	XX	XX	XX

N: The frequency that interviewees who planted late crops mentioned fertilizers. (Unit: time)

The input of four types of fertilizers for per unit of planting area for late rice in Hengyang City, Yueyang City and Changde City in Hunan Province in China, 2012

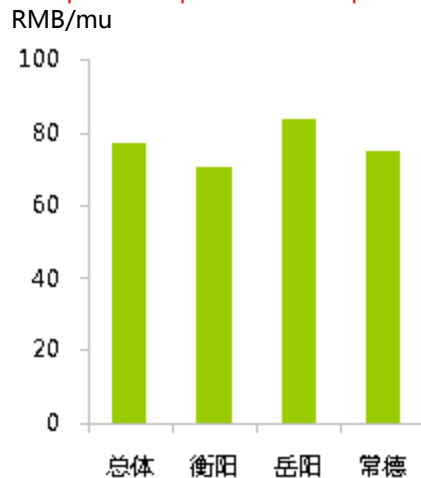
- To sum up, from high to low the input of four types of fertilizers per mu for late rice in Hengyang City, Yueyang City and Changde City is: Compound fertilizers(RMB77/mu), phosphate fertilizers(RMB37/mu), nitrogen fertilizers(RMB33/mu) and potash fertilizers(RMB28/mu).
- In terms of the input of nitrogen fertilizers and phosphate fertilizers per mu, that of Hengyang City is much higher than the other two cities.
- In terms of the input of compound fertilizers, Yueyang City ranks top one.
- In terms of the input potash fertilizers, there is no much difference between Yueyang City and Changde City.

Input of nitrogen fertilizers per mu



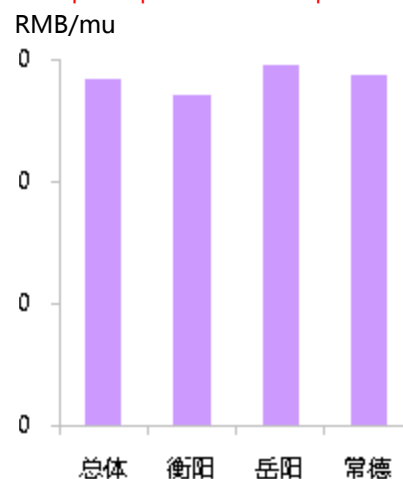
Based on the planting area of late rice where nitrogen fertilizers are applied

Input of compound fertilizers per mu



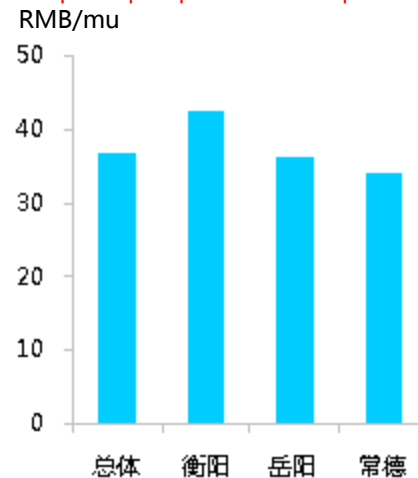
Based on the planting area of late rice where compound fertilizers are applied

Input of potash fertilizers per mu



Based on the planting area of late rice where potash fertilizers are applied

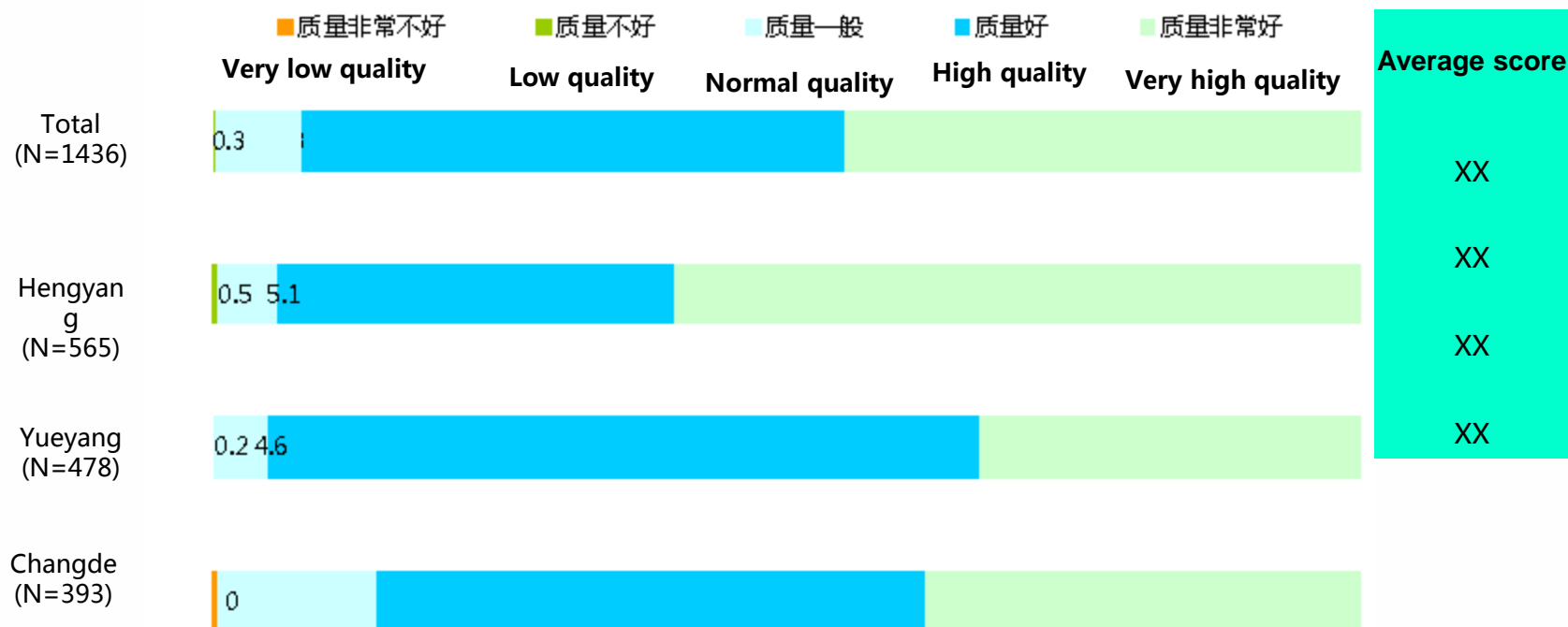
Input of phosphate fertilizers per mu



Based on the planting area of late rice where phosphate fertilizers are applied

Farmer's comments on the application effect of fertilizers for late rice in Hengyang City, Yueyang City and Changde City in Hunan Province in China, 2012

- Farmers in these three cities thought highly of fertilizers for late rice planting
- Overall, more than 90% of farmers surveyed considered the quality of fertilizers they used was high and among these farmers over 40% thought the quality was very high.
- High proportion of farmers surveyed in Changde City considered the quality of fertilizers they used for late rice planting is normal.
- In terms of the average score, farmers surveyed in Hengyang City gave higher comments than those in Yueyang City and Changde City.

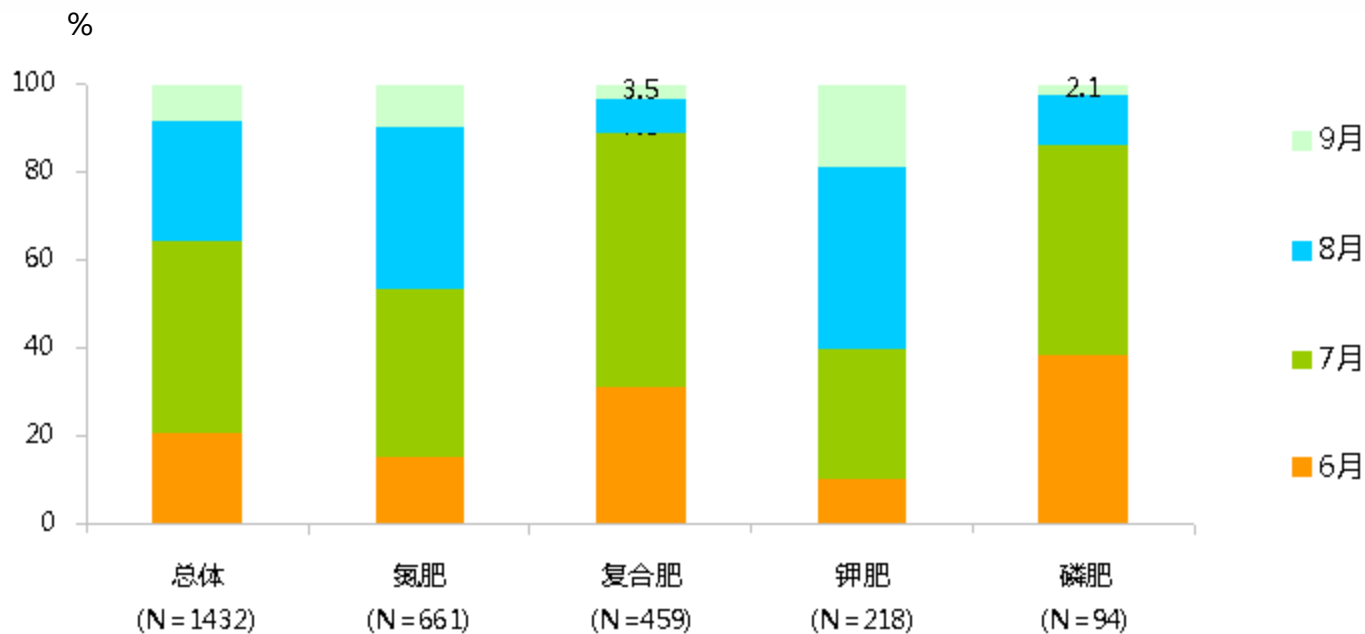


N: The frequency that interviewees who planted late crops mentioned fertilizers. (Unit: time)

D31g. What do you think of the application effect of fertilizers you are using? Please choose a score from 1-5 to express your comment. 1 equals to very low quality and 5 equals to very high quality.

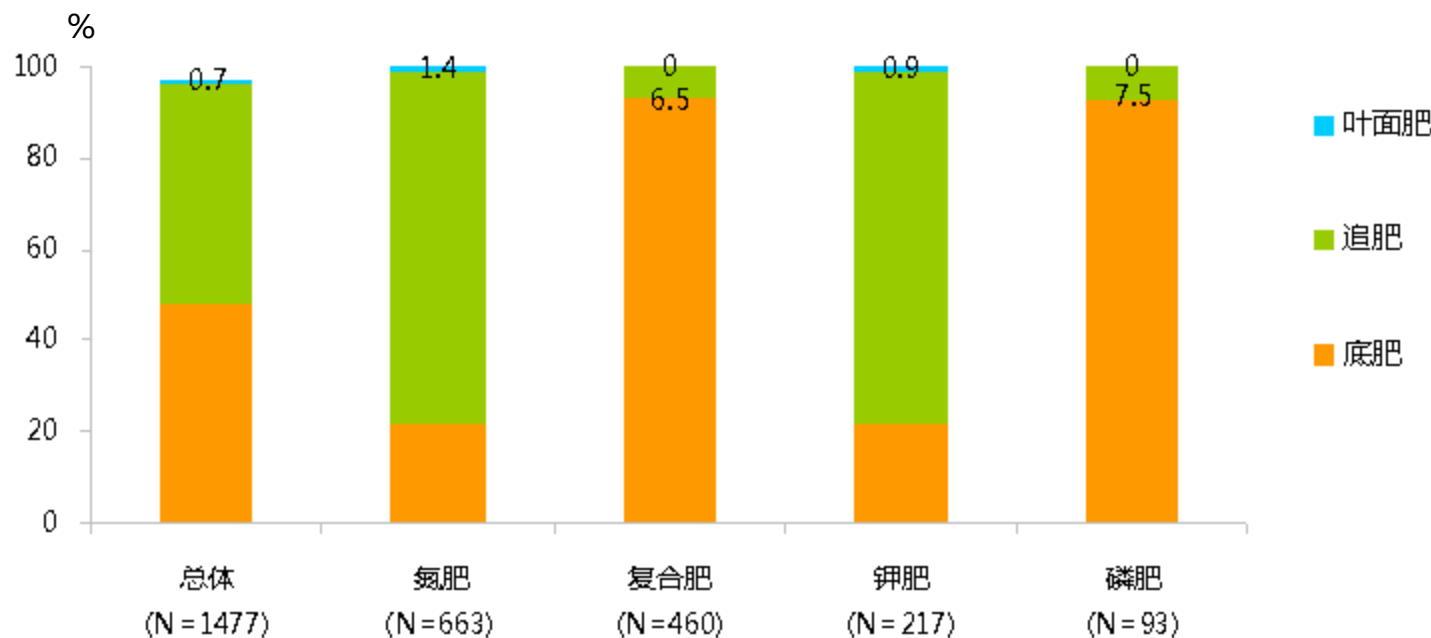
Application of fertilizers for late rice in Hengyang City, Yueyang City and Changde City in Hunan Province in China, 2012

- Basically application of almost all types of fertilizers for late rice concentrated in June-Aug. in a year.
- Approximately 90% of compound fertilizers and phosphate fertilizers are applied in June-July and nearly 50% of them are applied in July.
- Nitrogen fertilizers and potash fertilizers are applied in July-Aug.



N: The frequency that interviewees who planted late crops mentioned fertilizers. (Unit: time)

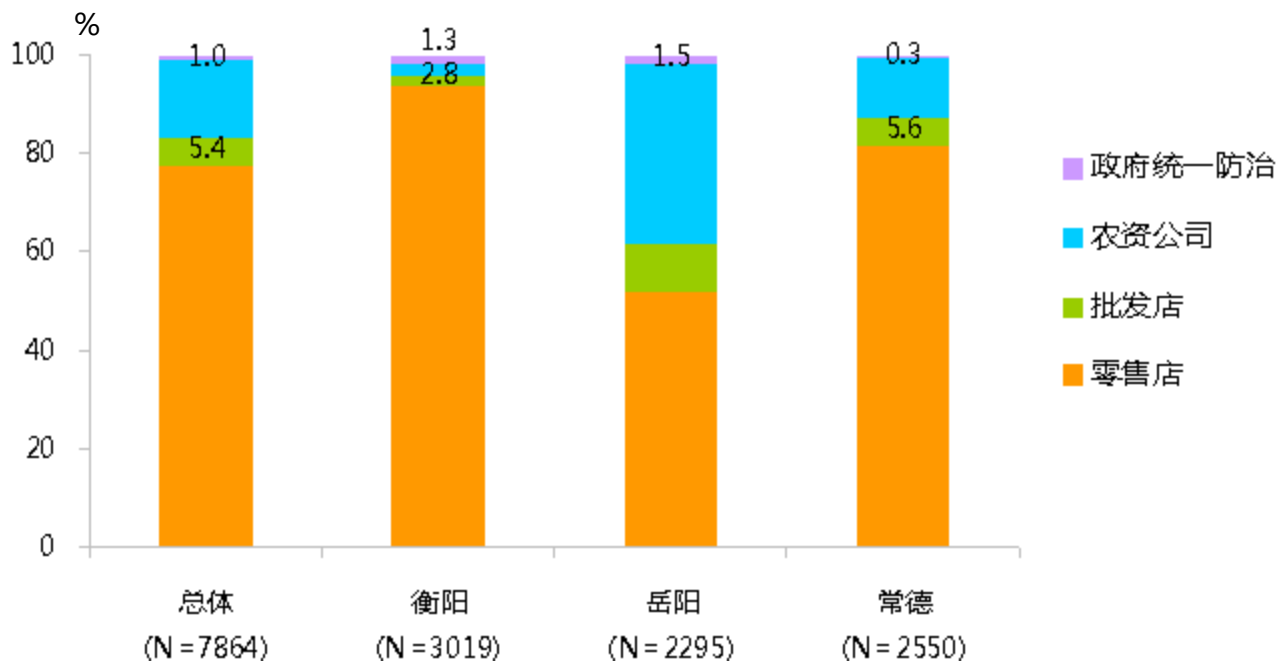
- Fertilizers for late rice planting only function as base fertilizers and topdressing; they seldom function as foliar fertilizers.
- Compound fertilizers and phosphate fertilizers chiefly function as base fertilizers.
- Nitrogen fertilizers and potash fertilizers chiefly function as topdressing; approximately 20% are used as base fertilizers.



N: The frequency that interviewees who planted late crops mentioned fertilizers. (Unit: time)

Purchasing channel of pesticides for late rice in Hengyang City, Yueyang City and Changde City in Hunan Province in China, 2012

- A majority of farmers purchased pesticides in retail stores and many of the others purchased from enterprise engaged in agricultural means of production.
- There is a big difference when these three cities are compared. More than 90% of the farmers in Hengyang City and more than 80% of those in Changde City purchased pesticides in retail stores while in Yueyang City about 50% of farmers purchased pesticides in retail stores and approximately 40% purchased directly from enterprise engaged in agricultural means of production.



N: The frequency that interviewees who planted late crops mentioned fertilizers. (Unit: time)